

**PONSSE**



**ECONOMICAL  
AND EFFICIENT**

**PONSSE BEAVER**





# STURDY AND AGILE

## A TRUE POWERHOUSE FOR THINNING SITES

PONSSE Beaver is a reliable and versatile harvester – from dense first thinning to regeneration felling. The simple and strong basic structure of PONSSE Beaver, combined with the most comfortable cabin on the market and the easy-to-use but comprehensive PONSSE Opti information system, guarantees producing operating hours and a long service life. The most powerful hydraulic capacity in its size category, reliable PONSSE cranes and efficient harvester heads make up for an entity that is not shadowed even by its larger counterparts.

Beaver's chassis structure is based on a short wheelbase and free-floating portal axle. Combined, they result in an agile all-terrain solution for the demanding thinning conditions.

Thanks to the extendable crane, a low centre of gravity and long reach, Beaver is stable in all conditions.



### WITH THE PONSSE ACCURACY

*All PONSSE crane models are designed and manufactured in-house so that the quality and functionality of the crane/base machine combination will match the requirements of the operator and Ponsse.*

### CRANE FOR YOUR NEEDS

The **PONSSE C44+** parallel crane is strong and reliable. The low centre of gravity, functional geometry and the exceptional performance of the hydraulic tilt movement enhance the machine's stability and result in substantially lower rates of fuel consumption. The C44+ crane is particularly easy to use at thinning sites.

### PONSSE MANAGER

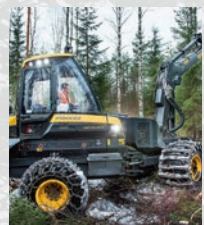
PONSSE Manager allows you to easily monitor and control your company's daily operations. The comprehensive and user-friendly tool helps in maintaining your harvester fleet and increases the efficiency of work planning and reporting. PONSSE Manager provides you with real-time, comprehensive data on your fleet – both performance and sites. Manager can be used conveniently on a smartphone, tablet or PC. Forest machines equipped with data transfer and GPS transmit the data automatically to an Internet-based reporting service.





# PONSSE BEAVER

## A RELIABLE AND ECONOMICAL GENERAL-PURPOSE HARVESTER



### FRAMES

The low centre of gravity, sturdy frame joint and swing axle that can be locked freely with hydraulic cylinders during work make Beaver a stable machine. In addition to reliability, the functional positioning and serviceability of components are typical characteristics of the structure.



### SERVICEABILITY

Ease of maintenance can be achieved through an improved positioning of service points, service lights and safe service platforms.



### ERGONOMICS

Ergonomics and ease of use are important factors when it comes to productivity. The cabin offers plenty of storage space, the most ergonomic controls available in the market and the excellent visibility which is characteristic of all PONSSE forest machines.



### AGILITY

The turning radius of the agile and compact Beaver is only 6.1 metres. With the far-reaching crane, Beaver works smoothly even in the tightest places.



### ENGINE

A powerful Mercedes-Benz engine with high torque has low emissions and fast response!



### CRANE

A PONSSE C44+ parallel crane, with parallel action, uses hydraulics instead of mechanical leverage. This makes the crane more fuel-efficient, powerful and lower-maintenance.



### TRANSMISSION

The transmission offers more practical tractive force and an even better feel in all types of terrain.





# LESS SERVICE, MORE OPERATION

The technology and hydraulics offer longer service intervals, increasing effective operating hours and reducing operating costs. In addition, easy access

to important components speeds up maintenance. Important developments in the new product series include the positioning of components and

service points, as well as the ease of maintenance, as requested by our customers.



### SERVICE LIGHTS

Service lights are located in the bumper casings and under the cabin and engine cover



### STORAGE SPACE FOR ACCESSORIES

The machine provides plenty of storage space for tools and accessories in various locations.



### INSPECTION POINTS

Daily checks are easy to perform without climbing or stretching



### EASY ACCESSIBILITY

Batteries, Webasto heating systems, the central lubrication unit, electrical centre, pneumatic connectors and measuring points are easily accessible under opening bumper casings.



### CLARITY FOR MAINTENANCE

Machine designs have been clarified and machine models standardised. In addition, an owner's manual and a service book are always delivered with the machine.

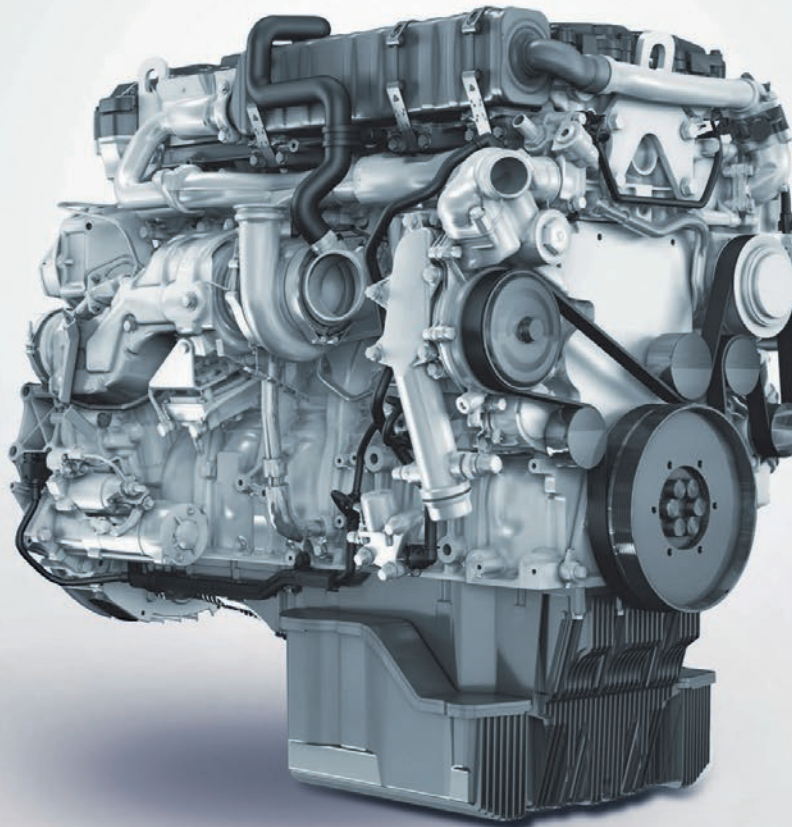
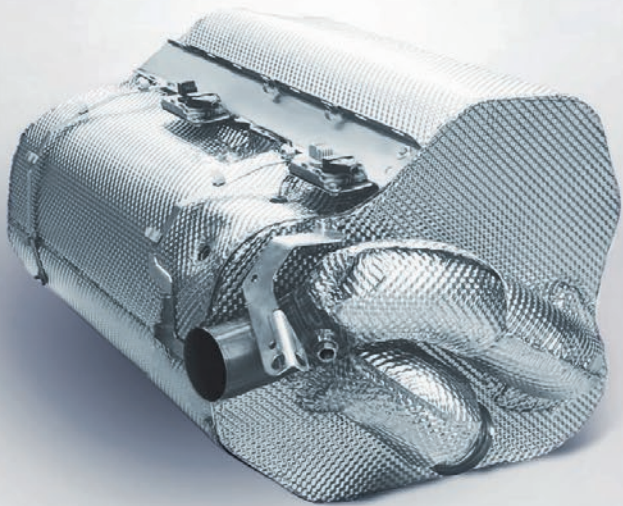


### SERVICE PLATFORMS AND STEPS

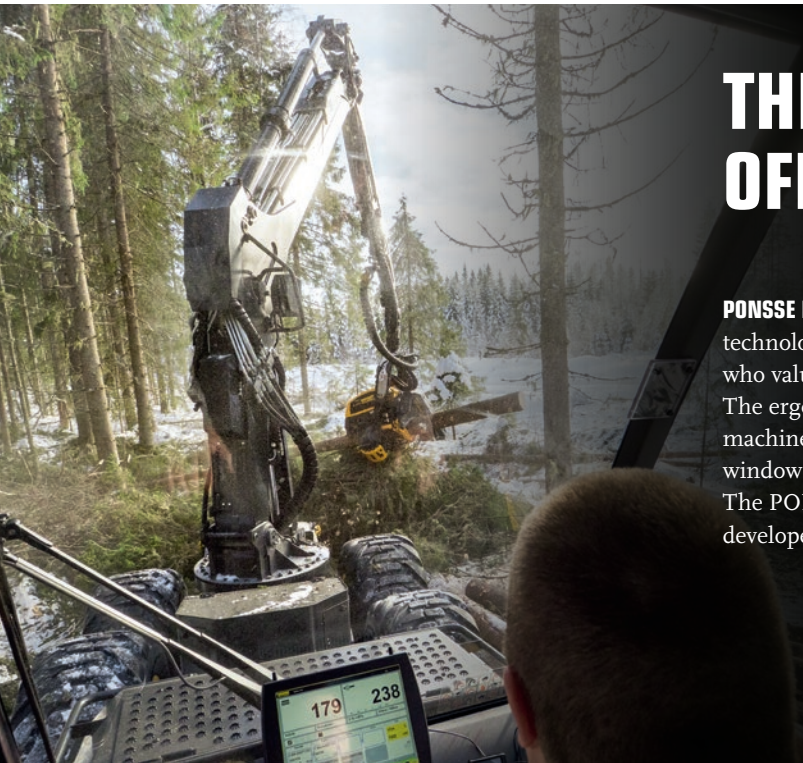
The anti-slip service platforms and attachments of the new service steps enable easier and safer maintenance procedures.

# CLEAN PERFORMANCE WITH NEW ENGINES

Ponsse uses the latest Mercedes-Benz/MTU engine technology to provide the highest performance and fuel economy with excellent reliability. They provide high torque at lower rpm level, as well as significantly lower emission levels. In Europe Stage V-engines are used where particle mass (PM) and amount of nitrous oxides are significantly lowered. Along with particle mass, in the new STAGE V level engines also number of particles is reduced by a diesel particulate filter (DPF).



*In North America PONSSE machines use the powerful and responsive Tier 4F level Mercedes Benz/MTU engines. In other countries, a Stage IIII level engines are used.*



# THE MOST COMFORTABLE OFFICE IN THE FIELD

**PONSSE BEAVER CABIN** offers a viewpoint to the latest forest machine technology. It provides a working environment for skilled professionals who value comfort, safety and ergonomics. The ergonomics of the controls represent the cutting edge of forest machines and, thanks to the large cabin, wide windows and thin window pillars, the visibility from the cabin is excellent in all directions. The PONSSE Comfort forest machine user interface has been developed together with operators and it utilises years of experience.

# THE BEST COACH FOR OPERATORS



**THE PONSSE ECODRIVE** application provides operators with useful and easily understandable information about the use of the machine. Through the machine's control system, it monitors machine load and fuel consumption for each function and indicates in real time whether the operator's working methods and machine controls are economical and efficient. Eco-Drive lets you focus on what is essential in order to develop working methods.



# PONSSE BEAVER

## DIMENSIONS

Minimum weight:	16 500 kg (36,376 lbs)
Typical weight:	17 500 kg (38,581 lbs)
Length:	7 300 mm (287 in)
Width:	2 750-3 085 mm (108-121 in)
Transportation height:	3 800 mm (150 in)
Ground clearance:	670 mm (26 in)

## ENGINE

Model:	Mercedes-Benz/MTU OM 934 LA Stage V/Tier 4 Final or Mercedes-Benz/MTU OM 924 LA EU Stage IIIA (according to legal requirements)
Power:	Stage V and Tier 4F: 150 kW (204 hp) Stage IIIA: 145 kW (197 hp)
Torque:	1 200–1 600 rpm, (Stage V: 850 Nm, Tier 4F: 800 Nm, Stage IIIA: 705 Nm)
Tractive force:	130 kN (29,225 lbf)
Fuel tank volume:	300 l (79.2 gal US)

## TIRES

Front:	650/65-26,5" or 750/55-26,5"
Rear:	600/55-26,5", 710/45-26,5" or 800-40-26,5"

## HYDRAULIC SYSTEM

Control system:	PONSSE OptiControl
Working pump:	190 cm <sup>3</sup> (11.6 cu in)
Oil tank volume:	200 l (53 gal US)

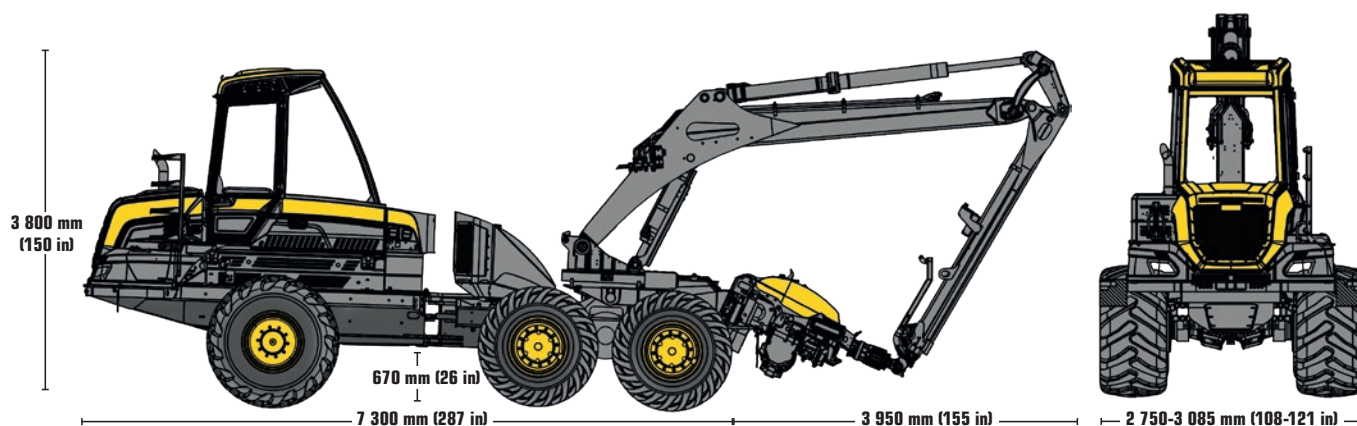
## CRANE

Model:	PONSSE C44+
Slewing torque (gross):	40 kNm
Crane tilt angle:	-12°/+18°
Turning angle:	250°
Lifting moment (gross):	230 kNm
Reach:	10–11 m (33-36 ft)

\* 11 m only with harvester head H5

## HARVESTER HEAD

Model:	PONSSE H5 PONSSE H6
--------	------------------------



The manufacturer reserves the right to make technical changes and improvements.



**Ponsse Plc.**  
Ponssentie 22  
74200 Vieremä  
FINLAND  
Tel.: +358 20 768 800  
Fax: +358 20 768 8690  
www.ponsse.com

**Ponsse North America, Inc.**  
4400 International Lane  
Rhineland, WI 54501  
USA  
Tel.: 715 369 4833  
Fax: 715 369 4838

**Ponsse UK Ltd.**  
4 Annan Business Park  
Annan  
Dumfriesshire  
DG12 6TZ  
UNITED KINGDOM  
Tel. +44 1461 207 510  
Fax +44 1461 207 511

**A logger's best friend**

[www.ponsse.com](http://www.ponsse.com)